



meti

UPVC UNDERGROUND
DRAINAGE AND SEWERAGE
FITTINGS



www.ALMUNIFPIPES.com

COMPANY PROFILE

We, Munir Abdullah Al-Munif Factory for Plastic Pipes and Fittings Company, are specialized in producing all types of plastic pipes with all its accessories of fittings. Our company was established 30 years ago.

Al-Munif Factories are located in Riyadh where the solid and flexible polyethylene is being produced as high and low density at diameters starting from 10mm to 1600mm with different lengths and pressure ratings as one of the leading factories in the region in producing such big diameters.

Besides producing Polyethylene Pipes; we are also producing PP-R pipes and Fittings for hot water applications with capacity of about 2000 ton with diameters starting from 20mm up to 160mm. Moreover; we are also producing uPVC and cPVC pipes and fittings for Potable water, drainage and sewerage network, and electrical and telecommunication networks, in addition to GRP pipes and fittings and Rubber products.

Production censorship is done in our laboratories to be sure of specifications compatibility. Our Laboratories has been equipped with all types of necessary systems to do those compatibility tests.

The production capacity is estimated with about 42,000 ton per year which is marketed and sold inside and outside the Kingdom.



CONTENTS

4	Dainage and Sewerage Systems
4	• UPVC pipe according to DIN 8062, ISO 161-1.
5	• UPVC Sewerage Pipes (Gravity) According to DIN 1953.
5	• UPVC Drain Pipes According to DIN 19531 .
6	• UPVC Underground Sewer Pipe (Gravity) According to BS 5481.
6	• UPVC Underground Drainage & Sewerage Pipes according to BS 4660.
6	• UPVC Aboveground Soil & Ventilating Pipes According tto BS 4514.
7	• UPVC Aboveground Waste Pipes according to BS 5255.
7	• UPVC Drain, Waste, Vent Pipes According to ASTM D 2665
8	Drainage and Sewerage UPVC Fittings RAL8023
12	Drainage and Sewerage UPVC Fittings RAL7001
18	Chemical Resistance

DRAINAGE AND SEWERAGE SYSTEMS

UPVC pipe according to DIN 8062, ISO 161-1

Class		Class 1		Class 2		Class 3		Class 4	
Nominal Pressure in Bars		2 BAR		4 BAR		6 BAR		10 BAR	
Nom-OD (mm)	Tolerance on Nom-OD (mm)	Nom-wall thickness (mm)	Nom-wt. kg/m	Nom-wall thickness (mm)	Nom-wt. kg/m	Nom-wall thickness (mm)	Nom-wt. kg/m	Nom-wall thickness (mm)	Nom-wt. kg/m
25	+0.2							1.5	0.174
32	+0.2							1.8	0.264
40	+0.2					1.8	0.334	1.9	0.350
50	+0.2					1.8	0.422	2.4	0.552
63	+0.2					1.9	0.563	3.0	0.854
75	+0.3			1.8	0.642	2.2	0.782	3.6	1.22
90	+0.3			1.8	0.774	2.7	1.13	4.3	1.75
110	+0.3	1.8	0.950	2.2	1.16	3.2	1.64	5.3	2.61
125	+0.3	1.8	1.08	2.5	1.48	3.7	2.13	6.0	3.64
140	+0.4	1.8	1.21	2.8	1.84	4.1	2.65	6.7	4.18
160	+0.4	1.8	1.39	3.2	2.41	4.7	3.44	7.7	5.47
180	+0.4	1.8	1.57	3.6	3.02	5.3	4.37	8.6	6.88
200	+0.4	1.8	1.74	4.0	3.70	5.9	5.37	9.6	8.51
225	+0.5	1.8	1.96	4.5	4.70	6.6	6.76	10.8	10.8
250	+0.5	2.0	2.40	4.9	5.65	7.3	8.31	11.9	13.2
280	+0.6	2.3	3.11	5.5	7.11	8.2	10.4	13.4	16.6
315	+0.6	2.5	3.78	6.2	9.02	9.2	13.2	15.0	20.9
355	+0.7	2.9	4.88	7.0	11.4	10.4	16.7	16.9	26.5
400	+0.7	3.2	6.10	7.9	14.5	11.7	21.1	19.1	33.7
450	+0.8	3.6	7.65	8.9	18.3	13.2	26.8	21.5	42.7
500	+0.9	4.0	9.38	9.8	22.4	14.6	32.9	23.9	52.6
560	+1.0	4.2	11.8	11.0	28.1	16.4	41.4	26.7	65.8
630	+1.1	2.0	14.7	12.4	35.7	18.4	52.2	30.0	83.2
710	+1.2	5.7	18.9	14.0	45.3	20.7	66.1		
800	+1.3	6.4	23.9	15.7	57.2	23.3	83.9		

Rubber Joint (R/J) Type Supplied from sizes 63mm up to 800mm
Solvent Cement (SC/J) Type supplied from sizes 16mm up to 800mm

UPVC Sewerage Pipes (Gravity) According to DIN 19534.

Applications : Sewerage Pipes Underground

Nominal Size (mm)	Outside Diameter (mm)		Wall Thickness (mm)		Insertion Depth (mm)	Weight kg/m
	(D)	Tolerance	(S)	Tolerance		
110	110	0.3	3.0	+ 0.5	115	1.63
125	125	0.3	3.0	+ 0.5	120	1.870
160	160	0.4	3.6	+ 0.6	132	2.650
200	200	0.4	4.5	+ 0.7	145	4.120
250	250	0.5	6.1	+ 0.9	160	7.00
315	315	0.6	7.7	+ 1.0	180	11.110
400	400	0.7	9.8	+ 1.2	200	17.800
500	500	0.9	12.2	+ 1.5	250	27.649
600	630	1.1	15.4	+ 1.8	300	43.944

LENGTH : 5.8 & 6 meters (Other lengths are available on request).

COLOUR : Golden Brown.

SOCKET TYPE : Solvent cement (SC/J) type, Rubber Joint (R/J) type

UPVC Drain Pipes According to DIN 19531.

Applications : waste and soil discharge systems inside buildings

Nominal Size (mm)	Outside Diameter (mm)		Wall Thickness (mm)		Weight kg/m
	Min	Max	Min	Max	
40	40.0	40.2	1.8	2.2	0.381
50	50.0	50.2	1.8	2.2	0.481
75	75.0	75.3	1.8	2.2	0.642
110	110.0	110.3	2.2	2.7	1.160
125	125.0	125.3	2.5	3.0	1.480
160	160.0	160.4	3.2	3.8	2.410

LENGTH : 4, 5.8 & 6 meters (Other lengths are available on request).

COLOUR : Grey.

SOCKET TYPE : Solvent cement (SC/J) type, Rubber Joint (R/J) type
Non standard lengths & colours available on request.

UPVC Underground Sewer Pipe (Gravity) According to BS 5481

Applications : Gravity Sewers Underground

Nominal Size	Outside Diameter (mm)		Wall Thickness (mm)		Weight kg/m
	Min	Max	Min	Max	
200 (8")	200.0	200.6	4.9	5.6	4.50
250 (10")	250.0	250.7	6.1	7.0	7.01
315 (12")	315.0	315.9	7.7	8.7	11.07
355	355.0	356.0	8.7	9.8	14.3
400 (16")	400.0	401.0	9.8	11.0	17.83
500	500.0	501.0	12.2	13.7	28.3
630	630.0	631.0	15.4	17.2	44.6

UPVC Underground Drainage & Sewerage Pipes according to BS 4660

Applications : Drainage Under Gardens, Fields, Driveways & Roads

Nominal Size	Outside Diameter (mm)		Wall Thickness (mm)		Weight kg/m
	Min	Max	Min	Max	
110 (4")	110.0	110.4	3.2	3.8	1.64
160 (6")	160.0	160.6	4.1	4.8	3.04

LENGTH : 5.8 & 6 meters (Other lengths are available on request).

COLOUR : Golden Brown.

SOCKET TYPE : Solvent cement (SC/J) type, Rubber Joint (R/J) type

Non standard lengths & colours available on request.

UPVC Aboveground Soil & Ventilating Pipes according to BS 4514

Applications : Soil & Ventilating Pipes Aboveground

Nominal Size	Outside Diameter (mm)		Wall Thickness (mm)		Weight kg/m
	Min	Max	Min	Max	
82 (3")	82.4	82.8	3.2	3.8	1.21
110 (4")	110.0	110.4	3.2	3.8	1.64
160 (6")	160.0	160.6	3.2	3.8	2.47

LENGTH : 5.8 & 6 meters (Other lengths are available on request).

COLOUR : Golden Brown.

SOCKET TYPE : Solvent cement (SC/J) type, Rubber Joint (R/J) type

Non standard lengths & colours available on request.

UPVC Aboveground Waste Pipes according to BS 5255

Applications : Waste Aboveground

Nominal Size	Outside Diameter mm		Wall Thickness (mm)		Weight kg/m
	Min	Max	Min	Max	
32 (1 1/4")	36.15	36.45	1.8	2.2	0.301
40 (1 1/2")	42.75	43.05	1.9	2.3	0.376
50 (2")	55.75	56.05	2.0	2.4	0.519

Nominal Size	Outside Diameter (mm)		Wall Thickness (mm)		Weight kg/m
	Min	Max	Min	Max	
32 (1 1/4")	36.15	36.45	1.8	2.2	0.301
40 (1 1/2")	42.75	43.05	2.3	2.8	0.452
50 (2")	55.75	56.05	2.4	2.9	0.620

Note: Table (b) for waste pipes - Cold water

LENGTH : 4, 5.8 & 6 meters (Other lengths are available on request).
 COLOUR : Grey.
 SOCKET TYPE : Solvent cement (SC/J) type, Rubber Joint (R/J) type
 Non standard lengths & colours available on request.

UPVC Drain, Waste, Vent Pipes According to ASTM D 2665.

Applications : Drain, Waste, Vent (DWV)

Nominal Size (inch)	Outside Diameter (mm)		Wall Thickness (mm)		Weight kg/m
	Min	Max	Min	Max	
1 1/4	42.03	42.29	3.56	4.07	0.65
1 1/2	48.11	48.41	3.68	4.19	0.77
2	60.18	60.48	3.91	4.42	1.04
3	88.7	89.1	5.49	6.15	2.14
4	114.07	114.53	6.02	6.73	3.05
6	168.0	168.56	7.11	7.97	5.37
8	218.7	219.46	8.18	9.17	8.11

LENGTH : 5.8 & 6 meters (Other lengths are available on request).
 COLOUR : White.
 SOCKET TYPE : Plain, Solvent cement (SC/J)
 Non standard lengths & colours available on request.



DIN EN 1401-1: NON-PRESSURE UNDERGROUND DRAINAGE AND SEWERAGE UPVC FITTINGS

RAL8023



Elbow 87° 30' R/J - M/F

Code	Size (mm)
1207010050	50
1207010075	75
1207010110	110
1207010160	160
1207010200	200
1207010250	250
1207010315	315
*1207010400	400
*1207010500	500
*1207010630	630



Elbow 45° R/J - M/F

Code	Size (mm)
1207011050	50
1207011075	75
1207011110	110
1207011160	160
1207011200	200
1207011250	250
1207011315	315
*1207011400	400
*1207011500	500
*1207011630	630



Tee 87° 30' R/J - M/F/F

Code	Size (mm)
1207050050	50
1207050075	75
1207050110	110
1207050160	160
1207050200	200
1207050250	250
1207050315	315
*1207050400	400
*1207050500	500
*1207050630	630



Register Coupling R/J - F/F

Code	Size (mm)
1207020050	50
1207020075	75
1207020110	110
1207020160	160
1207020200	200
1207020250	250
1207020315	315
*1207020400	400
*1207020500	500
*1207020630	630



Repair Coupling R/J - F/F

Code	Size (mm)
1207021050	50
1207021075	75
1207021110	110
1207021160	160
1207021200	200



Wyee 45° R/J - M/F/F

Code	Size (mm)
1207080050	50
1207080075	75
1207080110	110
1207080160	160
1207080200	200
*1207080250	250
*1207080315	315
*1207080400	400
*1207080500	500



Tee Reducer 87° 30' R/J - M/F/F

Code	Size (mm)
1207055075050	75x50
1207055110050	110x50
1207055110075	110x75
1207055160110	160x110
1207055200110	200x110
1207055200160	200x160
1207055250110	250x110
1207055250160	250x160
*1207055250200	250x200
1207055315100	315x110
1207055315160	315x160
*1207055315200	315x200
*1207055315250	315x250
*1207055400110	400x110
*1207055400160	400x160
*1207055400200	400x200
*1207055400250	400x250
*1207055400315	400x315



Wyee Reducer 45° R/J - M/F/F

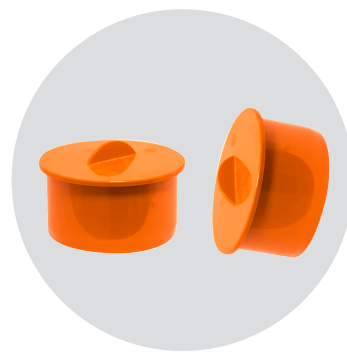
Code	Size (mm)
1207083075050	75x50
1207083110050	110x50
1207083110075	110x75
1207083160110	160x110
*1207083200110	200x110
*1207083200160	200x160
*1207083250110	250x110
*1207083250160	250x160
*1207083250200	250x200
*1207083315110	315x110
*1207083315160	315x160
*1207083315200	315x200
*1207083315250	315x250
*1207083400110	400x110
*1207083400125	400x160
*1207083400200	400x200
*1207083400250	400x250
*1207083400315	400x315



Reducer

R/J - M/F

Code	Size (mm)
1207060075050	75x50
1207060110050	110x50
1207060110075	110x75
1207060160110	160x110
1207060200100	200x110
1207060200160	200x160
*1207060250200	250x200
*1207060250200	250x200
*1207060315160	315x160
*1207060315200	315x200
*1207060315250	315x250
*1207060400315	400x315



End Plug

M

Code	Size (mm)
*1207078040	40
*1207078050	50
*1207078063	63
*1207078075	75
*1207078090	90
1207078110	110
1207078160	160
1207078200	200
*1207078250	250
*1207078315	315
*1207078400	400



Access Cap

SC/J - F

Code	Size (mm)
1207075110	110
1207075160	160
1207075200	200
*1207075250	250
*1207075315	315



Non Return Valve

R/J - M/F

Code	Size (mm)
*1207400110	110
1207400160	160
*1207400200	200
*1207400250	250
*1207400315	315



Floor Gully

SC/J - F

Code	Size (mm)
1207108110075	110x75x50x50x50



Roof Vent

SC/J - F

Code	Size (mm)
1207076050	50
1207076110	110



DIN EN 1401-1: NON-PRESSURE UNDERGROUND DRAINAGE AND SEWERAGE UPVC FITTINGS

RAL7001


Elbow 87° 30' SC/J - F/F

Code	Size (mm)
*1206010032	32
*1206010040	40
1206010050	50
1206010063	63
1206010075	75
1206010090	90
1206010110	110
1206010125	125
1206010160	160
1206010200	200
*1206010250	250
*1206010315	315
*1206010400	400


Elbow 87° 30' SC/J - M/F

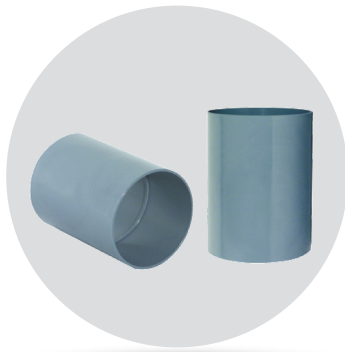
Code	Size (mm)
*1206013032	32
*1206013040	40
*1206013050	50
*1206013063	63
*1206013075	75
*1206013090	90
1206013110	110
*1206013160	160
*1206013200	200
*1206013250	250
*1206013315	315
*1206013400	400


Elbow 45° SC/J - M/F

Code	Size (mm)
*1206014032	32
*1206014040	40
*1206014050	50
*1206014063	63
*1206014075	75
*1206014090	90
1206014110	110
1206014160	160
*1206014200	200
*1206014250	250
*1206014315	315
*1206014400	400

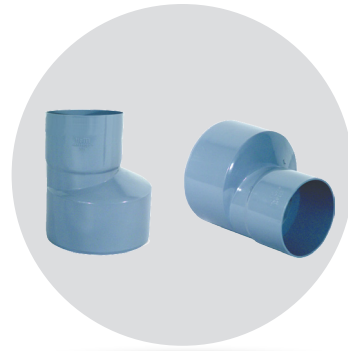

Elbow 45° SC/J - F/F

Code	Size (mm)
*1206011032	32
*1206011040	40
*1206011050	50
*1206011063	63
*1206011075	75
*1206011090	90
1206011110	110
*1206011160	160
*1206011200	200
*1206011250	250
*1206011315	315
*1206011400	400



Coupling SC/J - F/F

Code	Size (mm)
*1206020032	32
*1206020040	40
1206020050	50
1206020063	63
1206020075	75
1206020090	90
1206020110	110
1206020160	160
1206020200	200
*1206020250	250
*1206020315	315



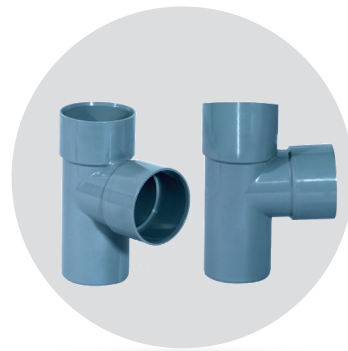
Reducer SC/J - M/F

Code	Size (mm)
*1206060050032	50x32
*1206060050040	50x40
1206060063040	63x40
*1206060063050	63x50
*1206060075050	75x50
*1206060075063	75x63
1206060090063	90x63
1206060090075	90x75
1206060110050	110x50
1206060110063	110x63
1206060110075	110x75
1206060110090	110x90
1206060160110	160x110
*1206060200110	200x110
1206060200160	200x160
*1206060250110	250x110
*1206060250160	250x160
*1206060250200	250x200
*1206060315160	315x160
*1206060315200	315x200
*1206060315250	315x250



Tee 87° 30' SC/J - F/F/F

Code	Size (mm)
*1206050032	32
*1206050040	40
1206050050	50
1206050063	63
1206050075	75
1206050090	90
1206050110	110
1206050200	200
*1206050250	250
*1206050315	315



Tee 87° 30' SC/J - M/F/F

Code	Size (mm)
*1206051032	32
*1206051050	50
*1206051063	63
*1206051075	75
*1206051090	90
1206051110	110
*1206051160	160
*1206051200	200
*1206051250	250
*1206051315	315



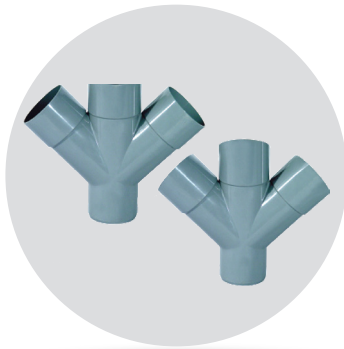
**Tee Reducer SC/J - M/F/F
87° 30'**

Code	Size (mm)
*1206055075050	75x50
*1206055110050	110x50
*1206055110063	110x63
*1206055110075	110x75
*1206055110090	110x90
1206055160110	160x110
*1206055200110	200x110
*1206055200160	200x160



Wye Reducer 45° SC/J - M/F/F

Code	Size (mm)
*1206082032	110x40
*1206082040	110x50
*1206082050	110x75
1206082075	160x110
*1206082110	200x110
*1206082160	200x160
*1206082200	250x160



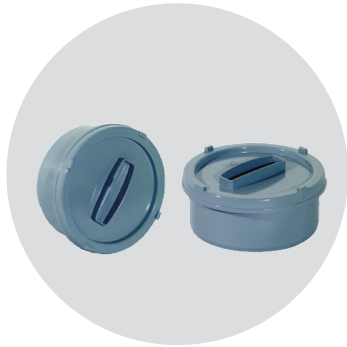
Double Wye 45° SC/J - M/F/F/F

Code	Size (mm)
*1206081032	32
*1206081040	40
*1206081050	50
*1206081063	63
*1206081075	75
*1206081090	90
*1206081110	110
*1206081160	160



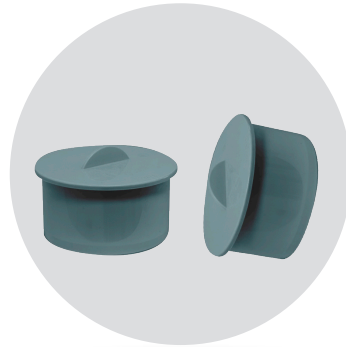
Cross Tee SC/J - M/F/F/F

Code	Size (mm)
*1206057050	50
*1206057063	63
*1206057075	75
*1206057090	90
*1206057110	110



Access Cap SC/J - F

Code	Size (mm)
1206075110	110
1206075160	160
1206075200	200
1206075250	250
*1206075315	315



End Plug SC/J - M

Code	Size (mm)
*1206078050	40
*1206078063	50
*1206078075	63
*1206078090	75
*1206078110	90
1206078125	110
1206078200	160
1206078250	200
*1206078315	250
*1206078400	315
*1206014400	400



Roof Vent SC/J - F

Code	Size (mm)
1206076050	50
1206076075	110



Floor Gully with Cover
Gully SC/J - F/F/F/F/F

Code	Size (mm)
1206251611	250 X 160 X 160 X 110 X110

Cover SC/J - F

Code	Size (mm)
1206251611	325 X325 X22



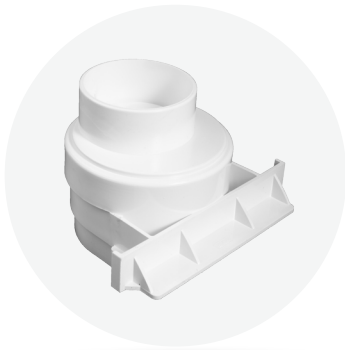
Grill Base

Name	Code	Size (mm)
Channel	1206105130500	130x500



Grill Cover

Name	Code	Size (mm)
Grill	1206104130500	130x500



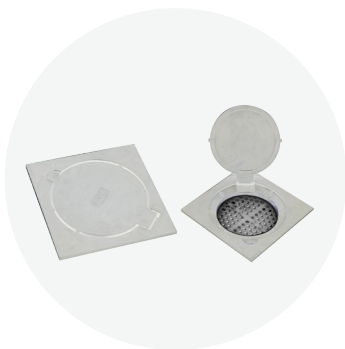
Grill End Cap

Name	Code	Size (mm)
End Cap	1206106130500	80x100x131



Well Box

A	B	C	size(mm)
189	161	200	200x200
286	253	297	300x400
384	355	397	400x400
535	500	520	550x550



Floor Drain

S/C

Code	Size (mm)
120610150050	150x150x30
120610100030	200x200x30



Roof Drain

Code	Size (mm)
1206084075	75
1206084110	110

CHEMICAL RESISTANCE



Chemical Resistance According to ISO/TR 7473

Reactives	Concentration	Temperature	
		C° 20	C° 60
Acetaldehyde	40%	NS	-
Acetaldehyde	100%	NS	-
Acetic Acid	Glacial	NS	NS
Acetic Acid	25%	S	L
Acetic Acid	60%	S	L
Acetic anhydride	100%	NS	NS
Acetone	100%	NS	NS
Adipic acid	Sat. sol.	S	L
Allyl alcohol	96%	L	NS
Aluminum Chloride	Sat. sol.	S	S
Aluminum potassium sulphate	Sat. sol.	S	S
Aluminum sulphate	Sat. sol.	S	S
Ammonia, dry gas	100%	S	S
Ammonia, liquid	100%	L	NS
Ammonia, aqueous	Dil. sol.	S	L
Ammonium Chloride	Sat. sol.	S	S
Ammonium Fluoride	20%	S	L
Ammonium Nitrate	Sat. sol.	S	S
Ammonium Sulphate	Sat. sol.	S	S
Amyl Acetate (1-Pentanol acetate)	100%	NS	NS
Amyl alcohol (1-Pentanol)	100%	S	L
Aniline	100%	NS	NS
Aniline	Sat. sol.	NS	NS
Aniline hydrochloride	Sat. sol.	NS	NS
Antimony (III) chloride	90%	S	S
Anthraquinone sulphonic acid	Sol.	S	L
Arsenic acid	Dil. sol.	S	-
Arsenic acid	Sat. sol.	S	L
Beer	-	S	S
Benzaldehyde	0.1%	NS	NS
Benzene	100%	NS	NS
Benzoic acid	Sat. sol.	L	NS
Borax	Sat. sol.	S	L
Boric acid	Dil. sol.	S	L
Bromic acid	10%	S	-
Bromine, liquid	100%	NS	NS
Butadiene	100%	S	S
Butane, gas	100%	S	-
Butanols	Up to 100%	S	L
Butyl acetate	100%	NS	NS
Butyl phenol	100%	NS	NS
Butyric acid	20%	S	L
Butyric acid	98%	NS	NS
Calcium chloride	Sat. sol.	S	S
Calcium nitrate	50%	S	S
Carbon dioxide (aqueous solution)	Sat. sol.	L	L
Carbon dioxide, dry gas	100%	S	S
Carbon dioxide, wet gas	-	S	S
Carbon disulphide	100%	NS	NS
Carbon tetrachloride	100%	NS	NS

S - Excellent resistance
L - Limited resistance
NS - No resistance

Chemical Resistance According to ISO/TR 7473

Reactives	Concentration	Temperature	
		20 °C	60 °C
Chlorine, dry gas	100%	L	NS
Chlorine, wet gas	Sat. sol.	L	NS
Chloroacetic acid	Sol.	S	L
Chlorosulphonic acid	100%	L	NS
Chromic acid	From 1% to 50%	S	L
Citric acid	Sat. sol.	S	S
Copper (II) Chloride	Sat. sol.	S	S
Copper (II) Fluoride	2%	S	S
Copper (III) sulphate	Sat. sol.	S	S
Cresols	Sat. sol.	-	NS
Cresylic acid (Methyl benzoic acid)	Sat. sol.	-	NS
Crotonaldehyde	100%	NS	NS
Cyclohexanol	100%	NS	NS
Clycohexanone	100%	NS	NS
Developers (photographic)	Work. sol.	S	S
Dextrin	Sat. sol.	S	L
Dichloroethane	100%	NS	NS
Dichloromethane	100%	NS	NS
Diethyl ether	100%	NS	-
Diglycolic acid	18%	S	L
Dimethylamine	30%	S	-
Ethanediol (Ethylene-glycol)	Work. sol.	S	S
Ethanol	95%	S	L
Ethyl acetate	100%	NS	NS
Ethyl acrylate	100%	NS	NS
Fluosilicic acid	32%	S	S
Formaldehyde	Dil. sol.	S	L
Formaldehyde	40%	S	S
Formic acid	From 1% to 50%	S	L
Furfuryl alcohol	100%	NS	NS
Gasoline (Aliphatic hydrocarbons)	-	S	S
Glucose	Sat. sol.	S	L
Glycerol	100%	S	S
Glycolic acid	30%	S	S
Hexadecanol	100%	S	S
Hydrobromic acid	10%	S	L
Hydrobromic acid	50%	S	L
Hydrochloric acid	20%	S	L
Hydrochloric acid	Greater than 30%	S	S
Hydrofluoric acid	40%	L	NS
Hydrofluoric acid	60%	L	NS
Hydrofluoric acid, gas	100%	L	NS
Hydrogen	100%	S	S
Hydrogen peroxide	30%	S	S
Hydrogen sulphide, gas	100%	S	S
Iron (III) chloride	Sat. sol.	S	S
Lactic acid	10%	S	L
Lactic acid	From 10% to 90%	L	NS
Lead acetate	Dil. sol.	S	S

S - Excellent resistance
L - Limited resistance
NS - No resistance

Chemical Resistance According to ISO/TR 7473

Reactives	Concentration	Temperature	
		C° 20	C° 60
Lead acetate	.Sat. sol	S	S
Lead tetraethyl	%100	S	-
Magnesium chloride	.Sat. sol	S	S
Magnesium sulphate	.Sat. sol	S	S
Maleic acid	.Sat. sol	S	L
Methanol	%100	S	L
Methyl methacrylate	%100	NS	NS
Milk	-	S	S
Molasses	.Work. sol	S	L
Nickel sulphate	.Sat. sol	S	S
Nicotinic acid	.Work. sol	S	S
Nitric acid	%45 Up to	S	L
Nitric acid	%98 to %50 From	NS	NS
Oils and fats	-	S	S
Olcic acid	%100	S	S
Oleum	to So3 %10	NS	NS
Orthophosphoric acid, aqueous	%30	S	L
Orthophosphoric acid, aqueous	%30 Greater than	S	S
Oxalic acid	.Dil. sol	S	L
Oxalic acid	.Sat. sol	S	S
Oxygen	%100	S	S
Ozone	%100	S	S
Perchloric acid	%10	S	L
Perchloric acid	%70	L	NS
Petrol (Aliphatic hydrocarbons/benzene)	20/80	NS	NS
Phenol	%90	NS	NS
Phenylhydrazine	%100	NS	NS
Phenylhydrazine hydrochloride	%97	NS	NS
Phosphine	%100	S	S
Phosphorus (III) chloride	%100	NS	-
Picric acid	.Sat. sol	S	S
Potassium bromide	.Sat. sol	S	S
Potassium chloride	.Sat. sol	S	S
Potassium chromate	%40	S	S
Potassium cyanide	.Sol	S	S
Potassium dichromate	%40	S	S
Potassium (hexacyanoferrate (II)	.Sat. sol	S	S
Potassium (hexacyanoferrate (III)	.Sat. sol	S	S
Potassium hydroxide	.Sol	S	S
Potassium nitrate	.Sat. sol	S	S
Potassium permanganate	%20	S	S
Potassium persulphate	.Sat. sol	S	L

S - Excellent resistance
L - Limited resistance
NS - No resistance







KINGDOM OF SAUDI ARABIA

Riyadh 11383 K.S.A P.O. Box 355342
Sales & Customer Service: +966 920000357
Fax: +966 112651845



www.ALMUNIFPIPES.com



info@mmppf.com